



# Newsletter

October 2023

[www.wavertree.liverpool.sch.uk](http://www.wavertree.liverpool.sch.uk)

Tel: 733 1231

Twitter: @WavertreeCE

## Harvest Service

Our Harvest Assembly took place this year on Wednesday 4<sup>th</sup> October at Holy Trinity Parish Church. All children from Reception to Y6 took part in the church service and reminded us of the importance of sharing what we have with others.

Thank you for your generous harvest donations this year. All of the Harvest gifts have now been shared with South Liverpool food bank.



## What's happening?

### October

18 <sup>th</sup>	Y6 Class Assembly
19 <sup>th</sup>	EYFS OPEN DAY
24 <sup>th</sup>	R-Y6 OPEN EVENING
25 <sup>th</sup>	R-Y6 OPEN EVENING
27 <sup>th</sup>	EYFS Stay and Play
27 <sup>th</sup>	School closes for half term

### November

6 <sup>th</sup>	INSET Day
7 <sup>th</sup>	School opens for all children
9 <sup>th</sup>	EYFS OPEN DAY
13 <sup>th</sup>	Y5/6 Cycling week
17 <sup>th</sup>	Y1/2 Film Night
21 <sup>st</sup>	Photograph day (Individual)
23 <sup>rd</sup>	Governors Meeting
24 <sup>th</sup>	Y3/4 Film Night

### December

1 <sup>st</sup>	Y5/6 Film Night
8 <sup>th</sup>	Christmas Fair at 3pm
13 <sup>th</sup>	Early Years' Nativity 10am
14 <sup>th</sup>	Early Years' Nativity 10am
19 <sup>th</sup>	Christmas Service 2pm
22 <sup>nd</sup>	School Term ends for all pupils R-Y6

### January

8 <sup>th</sup>	School opens for all children
-----------------	-------------------------------

## Secondary Transfer September 2024

Applications for secondary transfer for our current Year 6 pupils closes on Tuesday 31<sup>st</sup> October. It is really important that you do not miss this deadline.

Mrs Brooksbank is more than happy to help parents with the process. This term will end on Friday 27<sup>th</sup> October so please do make contact before this date.

If you miss the October deadline, your chances of receiving your first choice for secondary education is very likely to be lost and you may not receive any of the choices indicated in your late application.

## ALL About Family Magazine

You should have already received the 'All About Family' magazine via the school App. It provides information on the following areas:

Family Events in the area	New Children's Books
Back to School Anxiety	Top Tips for Open Evenings
Adult Education - Back to School	Bedtime Routines
Snapchat advice	Keeping Aquarium Ranger
A Day in the Life of Nugent - Tackling Poverty in Your Community	

## Shoebox Appeal



We are hoping to be able to contribute to the Operation Christmas Child Shoebox project again this year. Making a complete shoebox for a child is a wonderful thing to do. We are however, aware that this can be costly and children are able to contribute individual items to the project if they prefer.

We hope that you will join us in collecting some of the following items over the next coming weeks:

Dates	Items
7 <sup>th</sup> November - 10 <sup>th</sup> November	Colouring pens/pencils/Notepads/Exercise books
31 <sup>st</sup> October - 4 <sup>th</sup> November	Soap/Flannels/Sponges/toothbrushes and toothpaste/Hair Accessories/combs/brushes
13 <sup>th</sup> November - 17 <sup>th</sup> November	Small cuddly toys

## E Safety

It is important that we remain vigilant when it comes to the safety of children online. There are many benefits to using the internet and social media, however, there are many cases where young children can access inappropriate material and are led to participate in unsuitable conversations.

Please check the privacy settings for social media sites and talk to your children about staying safe online.

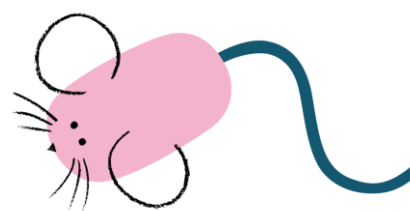
Here are some websites/resources that can provide you with further information:

[www.kidsmart.org.uk/parents/parental-controls.aspx](http://www.kidsmart.org.uk/parents/parental-controls.aspx)

[www.childnet.com/parents-and-carers](http://www.childnet.com/parents-and-carers)

[www.nspcc.org.uk](http://www.nspcc.org.uk)

[www.net-aware.org.uk](http://www.net-aware.org.uk)



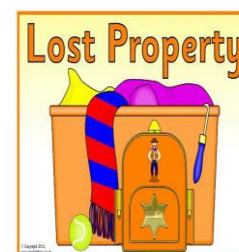
## Lost Property

There is a growing amount of lost property building up where no names are apparent on sweatshirts and coats.

Please put your child's name in all items of school clothing. It helps to return clothing promptly.

Thank you to those parents who return uniform to school that has been taken home by mistake.

Please look at the lost property during open evenings and claim your child's clothing.



### Attendance and Punctuality September 2023

Class	Attendance	Punctuality
EYFS	88.4%	98.7%
Class 1	93.9%	92.8%
Class 2	93.2%	90.7%
Class 3	95.6%	94.4%
Class 4	93.9%	93.6%
Class 5	94.3%	95.4%
Class 6	92.8%	95.1%
<b>School Average</b>	<b>93.1%</b>	<b>94.4%</b>
National Average	95.4%	

The Government have maintained a high target of 97% for attendance this year. The National average is currently 95.4%. We currently have 55 pupils with 100% attendance and over 100 pupils with 97% or above which is very good!

We must, however, keep trying to either maintain good attendance or improve attendance if early absences have affected your child.

You will continue to receive the monthly notice of your child's current attendance. **This is for information only.** Mrs Brooksbank or the Educational Welfare Officer, Connie Harvey, will get in touch with families where attendance is of some concern.

Punctuality for many children is excellent. Thank you to those parents who make the daily effort to bring their children to school on time!

Mrs Jenions will be contacting families this week where children are only minutes late each day. This can be easily rectified by leaving the house just a little bit earlier or walking faster down the High Street. Parents who allow their Y6 children to walk to school may wish to check that their child is arriving on time and not getting distracted on their way to school.

We are considering some incentives to help families get to school on time, particularly as the dark, cold months are rapidly approaching.

Term Dates are available at the Welcome Desk and on the school website to ensure that holidays are not booked during term time. Fines will automatically be issued for families taking holidays in term time. This is a Local Authority policy.

### The Giving Machine

It has been some time since The Giving Machine has been set up for Wavertree CE School. Many retail stores are donating to school if we access their websites through the Giving Machine.

As you begin your Christmas shopping or even do your weekly grocery shopping, please go to [www.TheGivingMachine.co.uk](http://www.TheGivingMachine.co.uk) to support school with free cash donations.



## PTA

We had a very successful PTA meeting this month. Thank you to everyone who came and shared their ideas.

We have organised a few events for the children for the Autumn Term and many thoughts for ways to support the children throughout the year.

Here are some dates for your diary:

Y1/Y2 Film Night - Friday 17<sup>th</sup> November

Y3/Y4 Film Night - Friday 24<sup>th</sup> November

Y5/Y6 Film Night - Friday 1<sup>st</sup> December

More details will follow next month.



The Christmas Fair will take place on Friday 8<sup>th</sup> December. Please Note: Friday 24<sup>th</sup> November and 1<sup>st</sup> December will be own clothes days in order to collect items for the fair. If you are able to support on any of the stalls, please do let us know.

Thank you.

## CLUBS FOR NEXT HALF TERM

Day	Club	Who can go?	Time	Staff Responsible
Monday	Pupil Leadership Group	Members	3.15pm - 4.00pm	Mrs Brooksbank
	Guitar Club	KS2	3.15pm - 4.00pm	Mr Holland
Tuesday	Homework Club	Members	3.15pm - 4.00pm	Mrs Vaughan
	Games Club	Y2	3.15pm - 4.00pm	Mrs Midgley
	Multi-Sports Club	Y3/4	3.15pm - 4.00pm	Mr Woods

Please collect your children promptly from the activities listed above. Thank you.

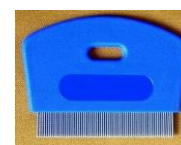


Our recent own clothes day raised £322. Thank you so much for your generosity.

### Headlice

Thank you to those parents who regularly check their child's hair for our little visitors and inform us!

It is so important that everyone deals with the issue so that it does not become a problem.



We will inform you if we observe live lice on your child's head so that you can treat your family accordingly.

The School Nurse is able to give you advice about the range of treatments available and how to access them without payment.



**Want to know  
more about  
sleep?**

ASK US THE  
QUESTIONS YOU  
WANT ANSWERS TO

 **03303 530 541**  
Monday, Tuesday & Thursday 7pm - 9pm  
Monday & Wednesday 9am - 11am